

THE  
MOTOR CYCLE  
INDUSTRY  
ASSOCIATION

**January 2001**

## **Statistical Booklet**

Powered Two Wheelers by:  
Vehicle Style, Model Series

12 Rolling Months, 2 Years Ago 12 Rolling Months, 2 Years Ago Year to Date, Current Month, Current Month 2 Years Ago, Current Month Last Year, Previous Year 12 Rolling Months, Previous Year to Date, Year to Date  
Number of Registrations and Market Share

**Reporting Period : 01 Jan 2001 - 31 Jan 2001**

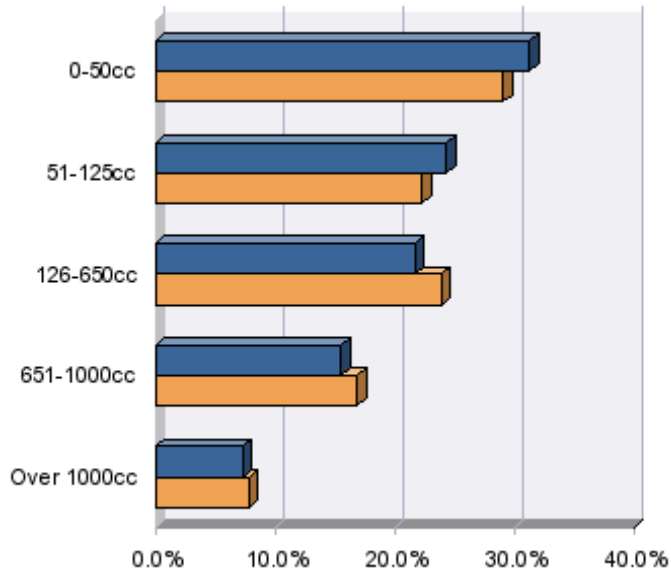


## Current Month, Year to Date and Rolling Year Registrations by Capacity

Engine Band	No of Registrations			Market Share (%)			No of Registrations			Market Share (%)			No of Registrations			Market Share (%)		
	Jan 2001 Month	Jan 2000 Month	% Change	Jan 2001 Month	Jan 2000 Month	% Change	Jan 2001 YTD	Jan 2000 YTD	% Change	Jan 2001 YTD	Jan 2000 YTD	% Change	Jan 2001 Rolling Year	Jan 2000 Rolling Year	% Change	Jan 2001 Rolling Year	Jan 2000 Rolling Year	% Change
0-50cc	2,940	1,934	52.0	31.3	29.1	7.4	2,940	1,934	52.0	31.3	29.1	7.4	49,209	1,934	2,444.4	28.4	29.1	-2.3
51-125cc	2,285	1,481	54.3	24.3	22.3	9.0	2,285	1,481	54.3	24.3	22.3	9.0	38,886	1,481	2,525.7	22.5	22.3	0.8
126-650cc	2,038	1,590	28.2	21.7	23.9	-9.4	2,038	1,590	28.2	21.7	23.9	-9.4	41,399	1,590	2,503.7	23.9	23.9	-0.1
651-1000cc	1,457	1,121	30.0	15.5	16.9	-8.2	1,457	1,121	30.0	15.5	16.9	-8.2	29,060	1,121	2,492.3	16.8	16.9	-0.5
Over 1000cc	686	519	32.2	7.3	7.8	-6.6	686	519	32.2	7.3	7.8	-6.6	14,553	519	2,704.0	8.4	7.8	7.6
<b>Total</b>	<b>9,406</b>	<b>6,645</b>	<b>41.6 </b>	<b>100.0</b>	<b>100.0</b>	<b>0.0 -</b>	<b>9,406</b>	<b>6,645</b>	<b>41.6 </b>	<b>100.0</b>	<b>100.0</b>	<b>0.0 -</b>	<b>173,107</b>	<b>6,645</b>	<b>2,505.1 </b>	<b>100.0</b>	<b>100.0</b>	<b>0.0 -</b>

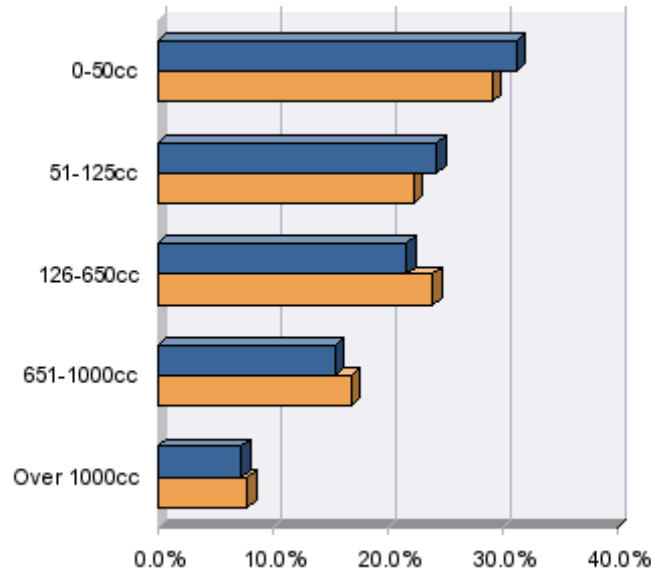
Top 10 Models (Month) % Market Share

Current Month Market Share  
 Last Year Market Share



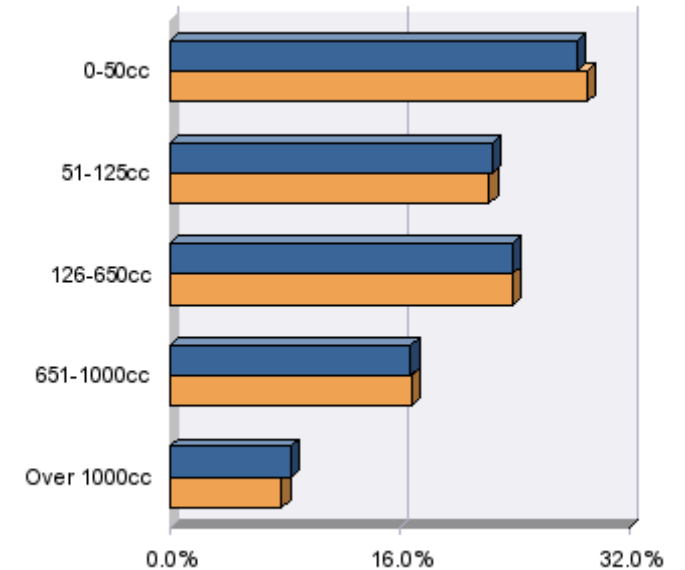
Top 10 Models (YTD) % Market Share

Current YTD Market Share  
 Last YTD Market Share



Top 10 Models (RY) % Market Share

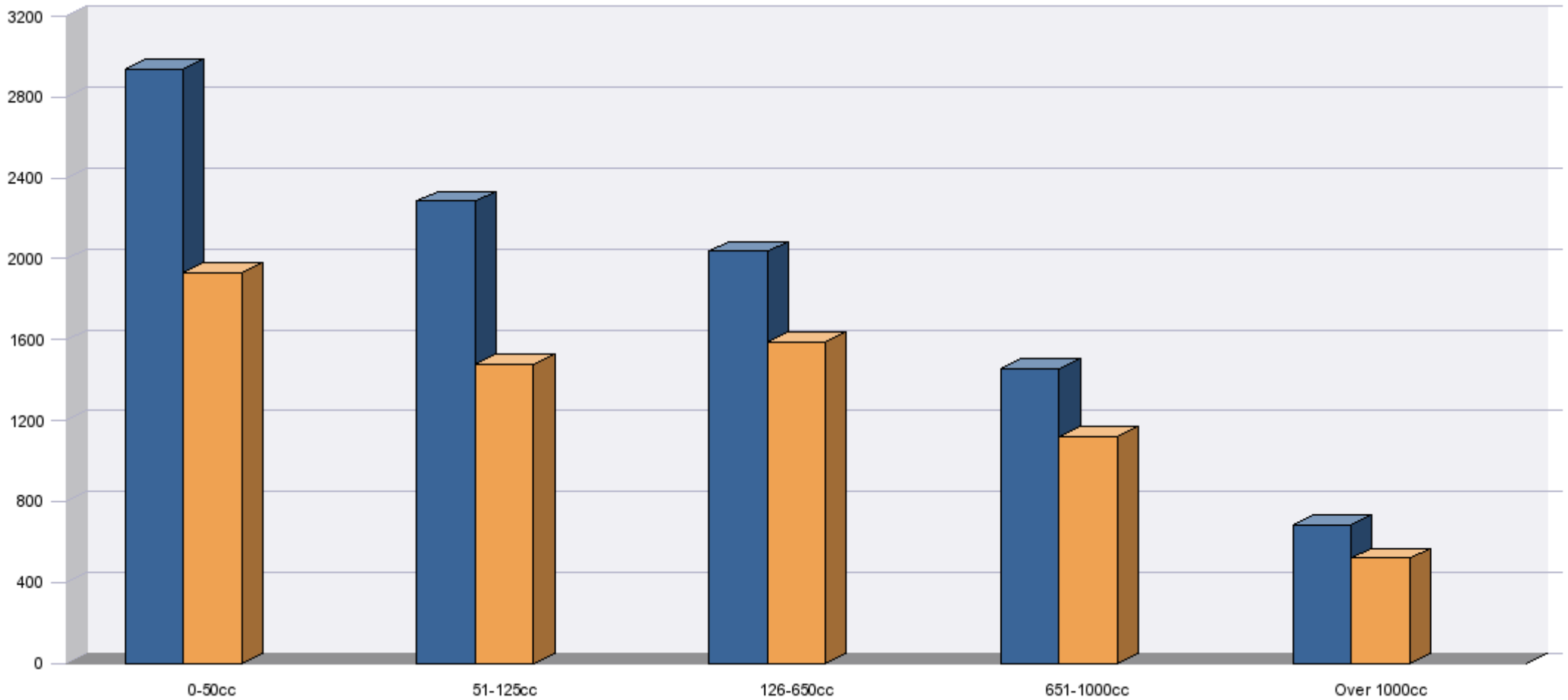
Current Rolling Year Market Share  
 Last Rolling Year Market Share





## Current Month Registrations by Capacity

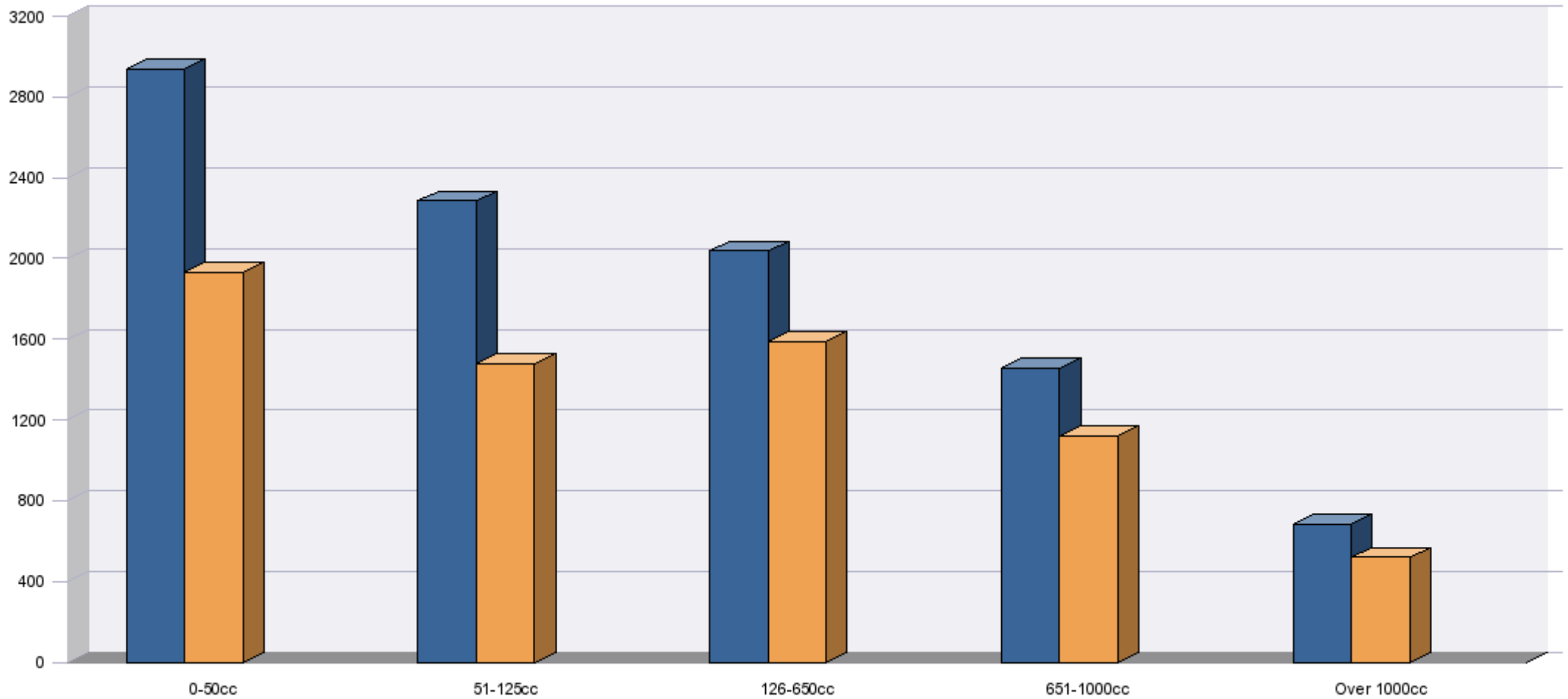
■ This Month      ■ Month 1 Year Ago      ■ Month 2 Years Ago





## Year to Date Registrations by Capacity

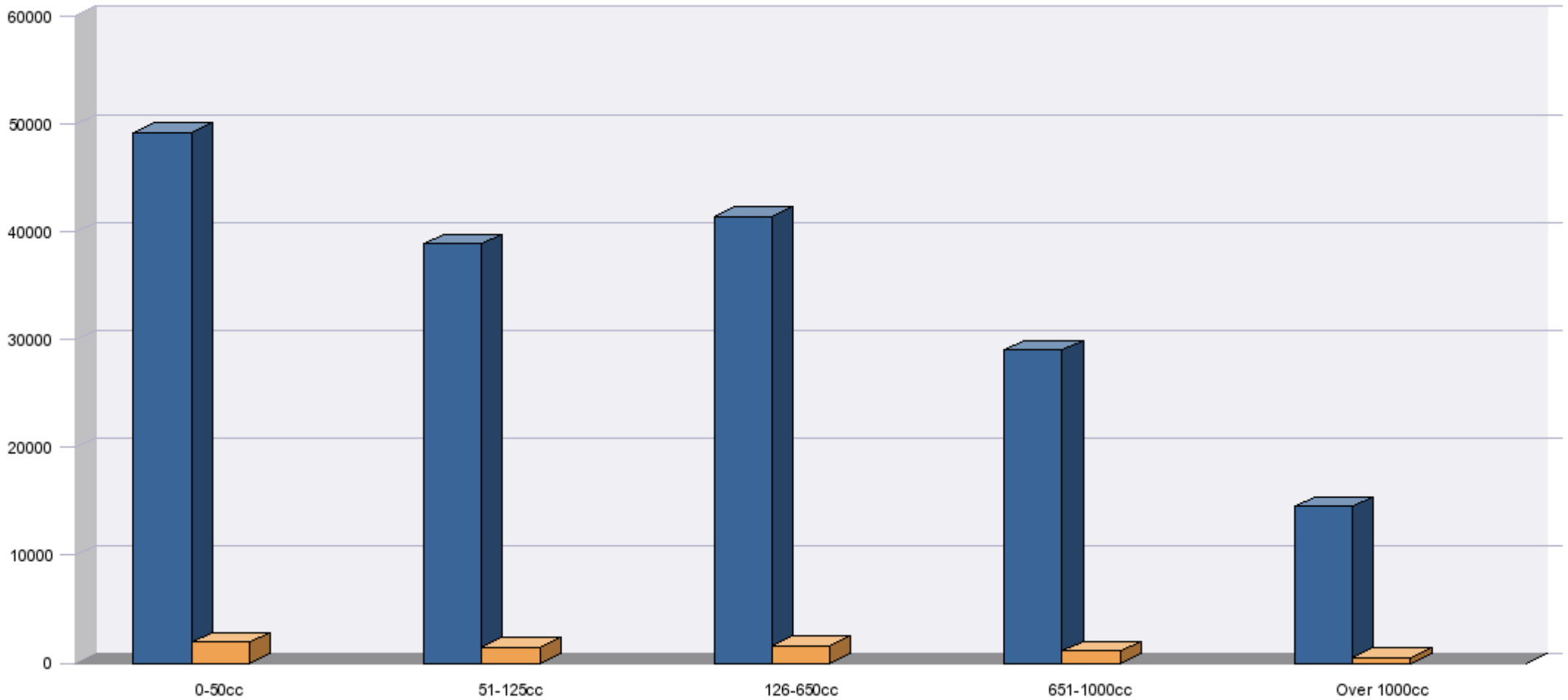
■ This Year      ■ 1 Year Ago      ■ 2 Years Ago





## Rolling Year Registrations by Capacity

This Rolling Year      Rolling 1 Year Ago      Rolling 2 Years Ago





# Statistical Booklet January 2001



## Current Month, Year to Date and Rolling Year Registrations by Style

MOPED	No of Registrations			Market Share (%)			No of Registrations			Market Share (%)			No of Registrations			Market Share (%)		
	Jan 2001 Month	Jan 2000 Month	% Change	Jan 2001 Month	Jan 2000 Month	% Change	Jan 2001 YTD	Jan 2000 YTD	% Change	Jan 2001 YTD	Jan 2000 YTD	% Change	Jan 2001 Rolling Year	Jan 2000 Rolling Year	% Change	Jan 2001 Rolling Year	Jan 2000 Rolling Year	% Change
NAKED	30	32	-6.3	1.0	1.7	-38.3	30	32	-6.3	1.0	1.7	-38.3	535	32	1,571.9	1.1	1.7	-34.3
SCOOTER	2,670	1,657	61.1	90.8	85.7	6.0	2,670	1,657	61.1	90.8	85.7	6.0	45,139	1,657	2,624.1	91.7	85.7	7.1
SPORTS	179	141	27.0	6.1	7.3	-16.5	179	141	27.0	6.1	7.3	-16.5	2,627	141	1,763.1	5.3	7.3	-26.8
UNSPECIFIED	61	104	-41.3	2.1	5.4	-61.4	61	104	-41.3	2.1	5.4	-61.4	908	104	773.1	1.8	5.4	-65.7
<b>Total</b>	<b>2,940</b>	<b>1,934</b>	<b>52.0 </b>	<b>100.0</b>	<b>100.0</b>	<b>0.0 -</b>	<b>2,940</b>	<b>1,934</b>	<b>52.0 </b>	<b>100.0</b>	<b>100.0</b>	<b>0.0 -</b>	<b>49,209</b>	<b>1,934</b>	<b>2,444.4 </b>	<b>100.0</b>	<b>100.0</b>	<b>0.0 -</b>

MOTORCYCLE	No of Registrations			Market Share (%)			No of Registrations			Market Share (%)			No of Registrations			Market Share (%)		
	Jan 2001 Month	Jan 2000 Month	% Change	Jan 2001 Month	Jan 2000 Month	% Change	Jan 2001 YTD	Jan 2000 YTD	% Change	Jan 2001 YTD	Jan 2000 YTD	% Change	Jan 2001 Rolling Year	Jan 2000 Rolling Year	% Change	Jan 2001 Rolling Year	Jan 2000 Rolling Year	% Change
ADVENTURE SPORT	254	186	36.6	3.9	3.9	-0.5	254	186	36.6	3.9	3.9	-0.5	3,804	186	1,945.2	3.1	3.9	-22.2
CUSTOM	368	256	43.8	5.7	5.4	4.7	368	256	43.8	5.7	5.4	4.7	7,913	256	2,991.0	6.4	5.4	17.5
NAKED	1,007	697	44.5	15.6	14.8	5.3	1,007	697	44.5	15.6	14.8	5.3	17,587	697	2,423.2	14.2	14.8	-4.1
SCOOTER	1,603	1,171	36.9	24.8	24.9	-0.3	1,603	1,171	36.9	24.8	24.9	-0.3	28,732	1,171	2,353.6	23.2	24.9	-6.7
SPORT/TOUR	708	664	6.6	10.9	14.1	-22.3	708	664	6.6	10.9	14.1	-22.3	16,111	664	2,326.4	13.0	14.1	-7.7
SUPERSPORT	1,780	1,176	51.4	27.5	25.0	10.3	1,780	1,176	51.4	27.5	25.0	10.3	39,367	1,176	3,247.5	31.8	25.0	27.3
TOURING	81	133	-39.1	1.3	2.8	-55.6	81	133	-39.1	1.3	2.8	-55.6	2,586	133	1,844.4	2.1	2.8	-26.1
TRAIL/ENDURO	447	300	49.0	6.9	6.4	8.6	447	300	49.0	6.9	6.4	8.6	5,369	300	1,689.7	4.3	6.4	-32.0
UNSPECIFIED	218	128	70.3	3.4	2.7	24.1	218	128	70.3	3.4	2.7	24.1	2,429	128	1,797.7	2.0	2.7	-27.8
<b>Total</b>	<b>6,466</b>	<b>4,711</b>	<b>37.3 </b>	<b>100.0</b>	<b>100.0</b>	<b>0.0 -</b>	<b>6,466</b>	<b>4,711</b>	<b>37.3 </b>	<b>100.0</b>	<b>100.0</b>	<b>0.0 -</b>	<b>123,898</b>	<b>4,711</b>	<b>2,530.0 </b>	<b>100.0</b>	<b>100.0</b>	<b>0.0 -</b>

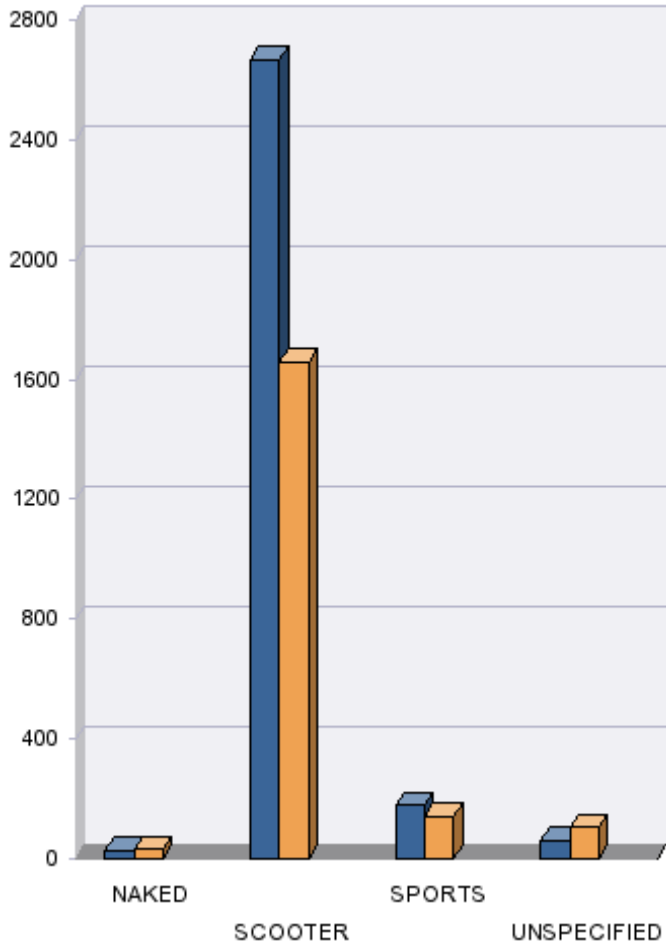
<b>Total</b>	<b>9,406</b>	<b>6,645</b>	<b>41.6 </b>	<b>100.0</b>	<b>100.0</b>	<b>0.0 -</b>	<b>9,406</b>	<b>6,645</b>	<b>41.6 </b>	<b>100.0</b>	<b>100.0</b>	<b>0.0 -</b>	<b>173,107</b>	<b>6,645</b>	<b>2,505.1 </b>	<b>100.0</b>	<b>100.0</b>	<b>0.0 -</b>
--------------	--------------	--------------	--------------	--------------	--------------	--------------	--------------	--------------	--------------	--------------	--------------	--------------	----------------	--------------	-----------------	--------------	--------------	--------------



## Current Month Registrations by Style

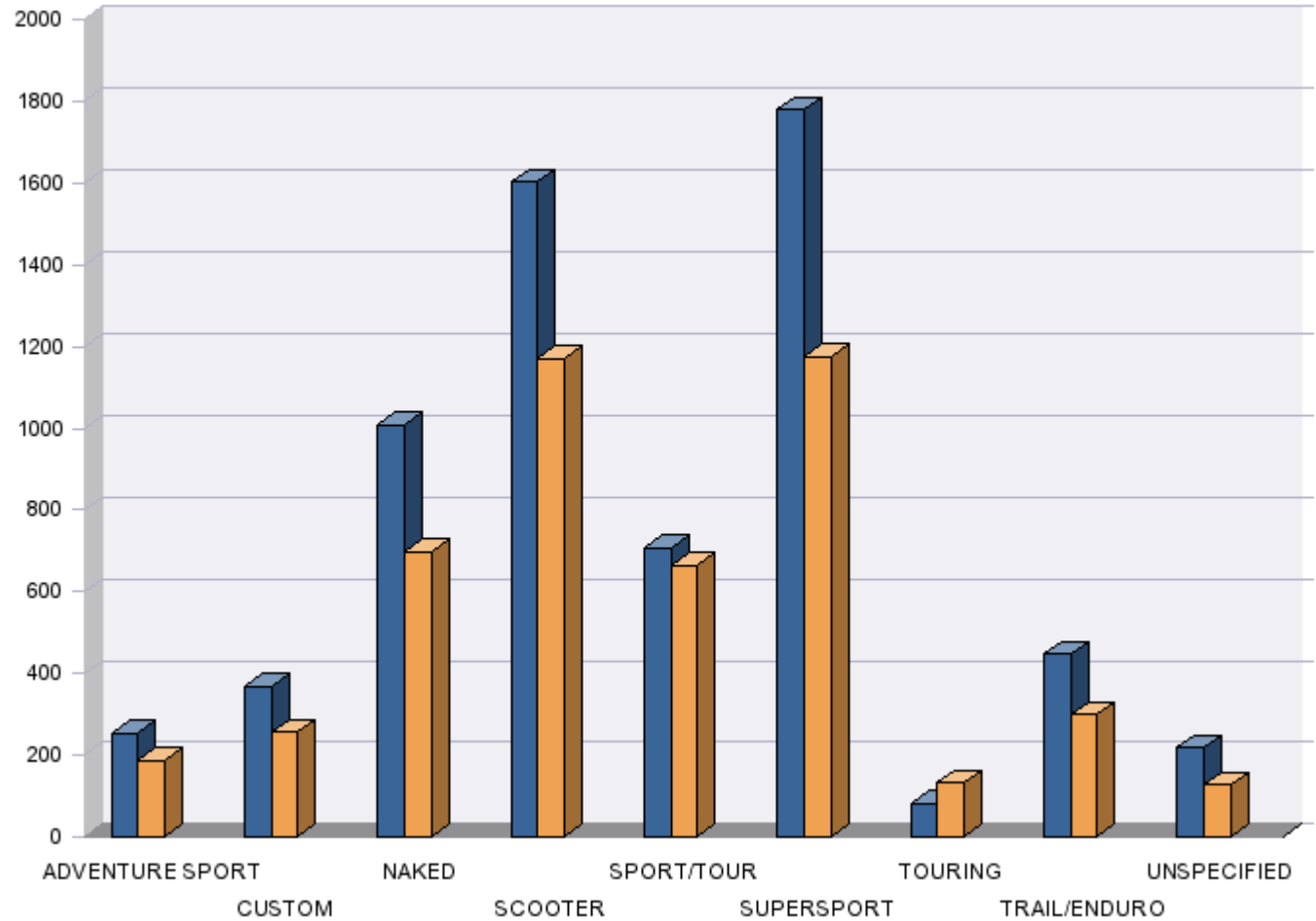
### Moped

- This Month
- Month 1 Year Ago
- Month 2 Years Ago



### Motorcycle

- This Month
- Month 1 Year Ago
- Month 2 Years Ago

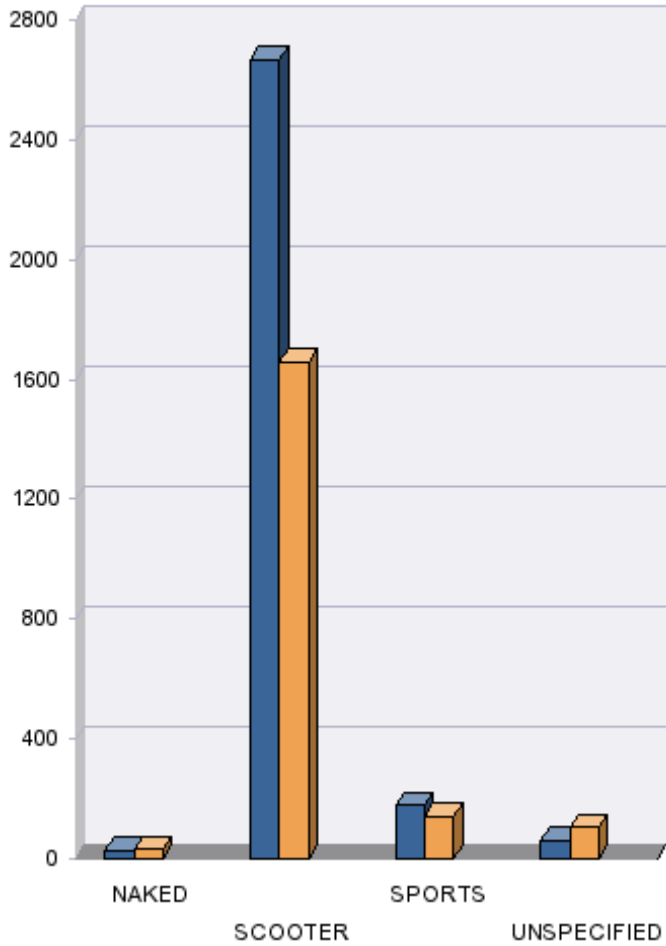




## Year to Date Registrations by Style

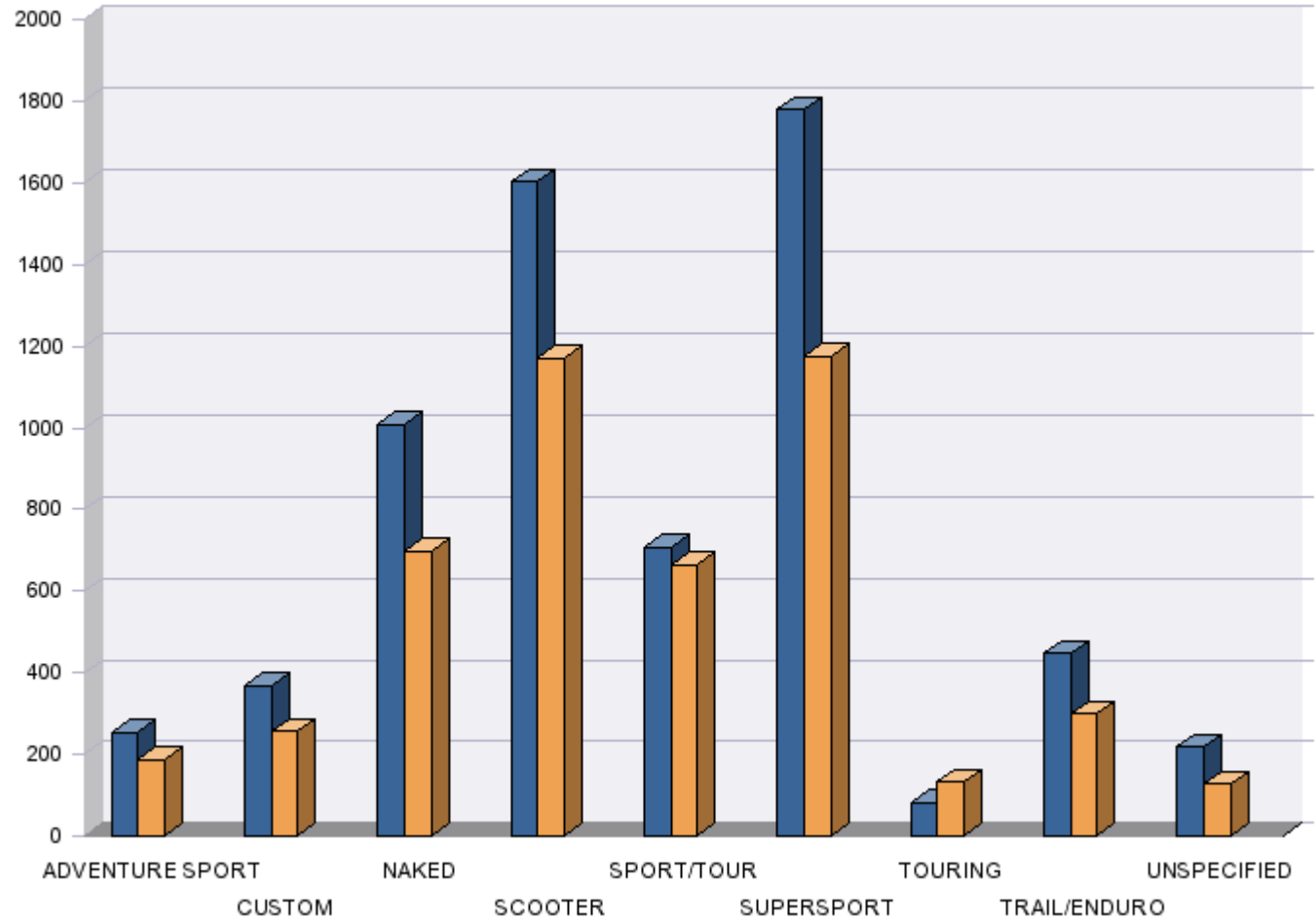
### Moped

- This Year
- 1 Year Ago
- 2 Years Ago



### Motorcycle

- This Year
- 1 Year Ago
- 2 Years Ago

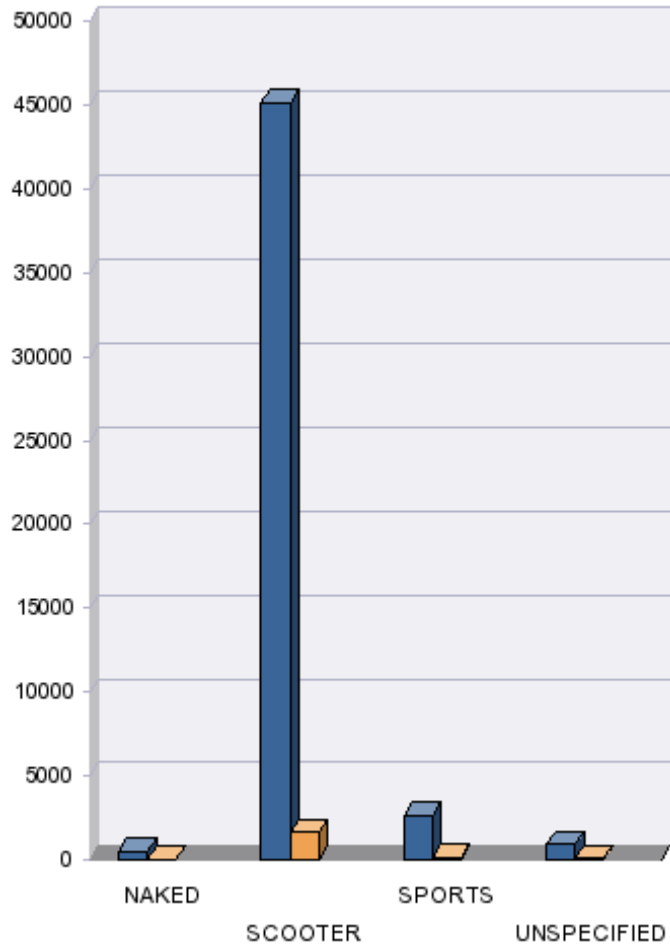




## Rolling Year Registrations by Style

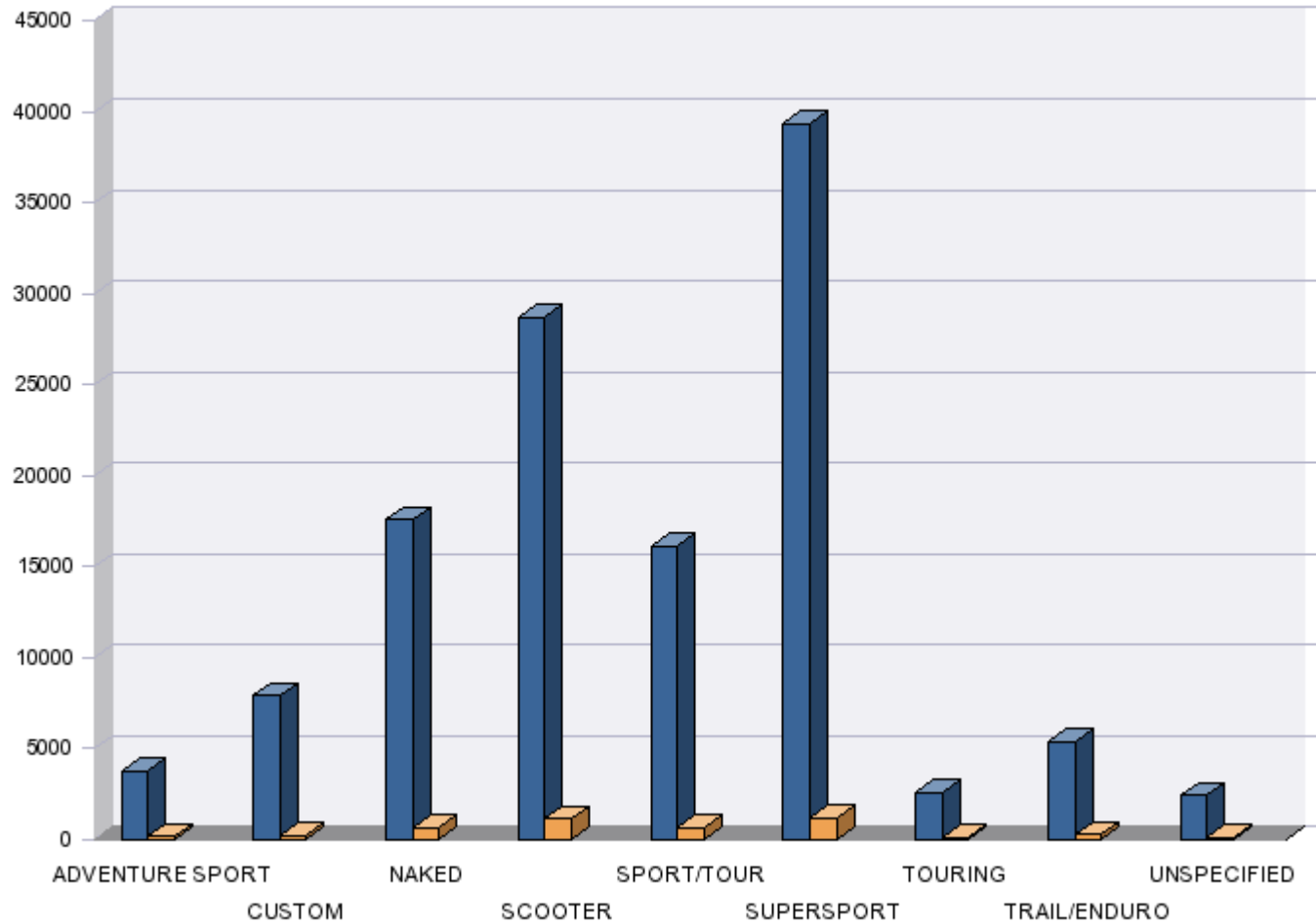
### Moped

- This Rolling Year
- Rolling 1 Year Ago
- Rolling 2 Years Ago



### Motorcycle

- This Rolling Year
- Rolling 1 Year Ago
- Rolling 2 Years Ago





# Statistical Booklet January 2001



## Current Month and Year to Date Registrations by County

Territory	Jan 2001 Month			Jan 2000 Month			Total % Change	Jan 2001 YTD			Jan 2000 YTD			Total % Change	Number Dealers YTD	Volume YTD per Dealer	Per Pop YTD (x1000)
	MOPEDES	M/CS	TOTAL	MOPEDES	M/CS	TOTAL		MOPEDES	M/CS	TOTAL	MOPEDES	M/CS	TOTAL				
Bedfordshire	16	54	70	16	42	58	20.7	16	54	70	16	42	58	20.7	1	70.00	0.12
Berkshire	30	73	103	15	41	56	83.9	30	73	103	15	41	56	83.9	1	103.00	0.18
Buckinghamshire	35	134	169	19	101	120	40.8	35	134	169	19	101	120	40.8	1	169.00	0.18
Cambridgeshire	35	84	119	17	79	96	24.0	35	84	119	17	79	96	24.0	1	119.00	0.15
Cheshire	71	88	159	70	69	139	14.4	71	88	159	70	69	139	14.4	1	159.00	0.16
Cleveland	39	53	92	47	46	93	-1.1	39	53	92	47	46	93	-1.1	1	92.00	0.14
Cornwall	15	54	69	20	38	58	19.0	15	54	69	20	38	58	19.0	1	69.00	0.13
Cumbria	20	45	65	16	30	46	41.3	20	45	65	16	30	46	41.3	1	65.00	0.12
Derbyshire	72	97	169	39	104	143	18.2	72	97	169	39	104	143	18.2	1	169.00	0.17
Devon	64	129	193	37	106	143	35.0	64	129	193	37	106	143	35.0	1	193.00	0.17
Dorset	40	96	136	24	50	74	83.8	40	96	136	24	50	74	83.8	1	136.00	0.18
Durham	17	37	54	12	30	42	28.6	17	37	54	12	30	42	28.6	1	54.00	0.11
Essex	68	210	278	60	126	186	49.5	68	210	278	60	126	186	49.5	1	278.00	0.16
Gloucestershire	94	129	223	45	96	141	58.2	94	129	223	45	96	141	58.2	1	223.00	0.18
Greater London	496	1,107	1,603	279	833	1,112	44.2	496	1,107	1,603	279	833	1,112	44.2	1	1603.00	0.22
Greater Manchester	113	215	328	90	139	229	43.2	113	215	328	90	139	229	43.2	1	328.00	0.13
Hampshire	76	228	304	45	157	202	50.5	76	228	304	45	157	202	50.5	1	304.00	0.17
Herefordshire	7	12	19	3	8	11	72.7	7	12	19	3	8	11	72.7	1	19.00	0.11
Hertfordshire	94	150	244	30	74	104	134.6	94	150	244	30	74	104	134.6	1	244.00	0.23
Humberside	32	55	87	34	41	75	16.0	32	55	87	34	41	75	16.0	1	87.00	0.14
Kent	65	199	264	37	149	186	41.9	65	199	264	37	149	186	41.9	1	264.00	0.16
Lancashire	73	109	182	59	91	150	21.3	73	109	182	59	91	150	21.3	1	182.00	0.12
Leicestershire	32	103	135	21	87	108	25.0	32	103	135	21	87	108	25.0	1	135.00	0.14
Lincolnshire	87	94	181	45	81	126	43.7	87	94	181	45	81	126	43.7	1	181.00	0.18



# Statistical Booklet January 2001



## Current Month and Year to Date Registrations by County

Territory	Jan 2001 Month			Jan 2000 Month			Total % Change	Jan 2001 YTD			Jan 2000 YTD			Total % Change	Number Dealers YTD	Volume YTD per Dealer	Per Pop YTD (x1000)
	MOPEDS	M/CS	TOTAL	MOPEDS	M/CS	TOTAL		MOPEDS	M/CS	TOTAL	MOPEDS	M/CS	TOTAL				
Merseyside	59	138	197	45	77	122	61.5	59	138	197	45	77	122	61.5	1	197.00	0.14
Norfolk	36	64	100	23	70	93	7.5	36	64	100	23	70	93	7.5	1	100.00	0.12
Northamptonshire	20	67	87	12	54	66	31.8	20	67	87	12	54	66	31.8	1	87.00	0.14
Northumberland	40	98	138	32	63	95	45.3	40	98	138	32	63	95	45.3	1	138.00	0.10
Nottinghamshire	68	92	160	40	81	121	32.2	68	92	160	40	81	121	32.2	1	160.00	0.15
Oxfordshire	33	79	112	20	63	83	34.9	33	79	112	20	63	83	34.9	1	112.00	0.16
Shropshire	30	38	68	8	46	54	25.9	30	38	68	8	46	54	25.9	1	68.00	0.15
Somerset	52	124	176	26	71	97	81.4	52	124	176	26	71	97	81.4	1	176.00	0.19
Staffordshire	52	403	455	40	81	121	276.0	52	403	455	40	81	121	276.0	1	455.00	0.37
Suffolk	45	68	113	38	52	90	25.6	45	68	113	38	52	90	25.6	1	113.00	0.16
Surrey	42	174	216	35	134	169	27.8	42	174	216	35	134	169	27.8	1	216.00	0.20
Sussex - East	32	50	82	14	54	68	20.6	32	50	82	14	54	68	20.6	1	82.00	0.12
Sussex - West	48	97	145	32	79	111	30.6	48	97	145	32	79	111	30.6	1	145.00	0.16
Warwickshire	21	49	70	17	42	59	18.6	21	49	70	17	42	59	18.6	1	70.00	0.13
West Midlands	119	177	296	87	164	251	17.9	119	177	296	87	164	251	17.9	1	296.00	0.13
Wiltshire	39	98	137	30	74	104	31.7	39	98	137	30	74	104	31.7	1	137.00	0.21
Worcestershire	31	60	91	12	46	58	56.9	31	60	91	12	46	58	56.9	1	91.00	0.14
Yorkshire - North	34	72	106	41	64	105	1.0	34	72	106	41	64	105	1.0	1	106.00	0.13
Yorkshire - South	74	154	228	45	85	130	75.4	74	154	228	45	85	130	75.4	1	228.00	0.17
Yorkshire - West	90	187	277	76	132	208	33.2	90	187	277	76	132	208	33.2	1	277.00	0.13
Wales - Central	12	32	44	10	25	35	25.7	12	32	44	10	25	35	25.7	1	44.00	0.08
Wales - North	15	34	49	12	38	50	-2.0	15	34	49	12	38	50	-2.0	1	49.00	0.07
Wales - South	51	137	188	35	114	149	26.2	51	137	188	35	114	149	26.2	1	188.00	0.10
Central Scotland	11	15	26	3	22	25	4.0	11	15	26	3	22	25	4.0	1	26.00	0.04



# Statistical Booklet January 2001



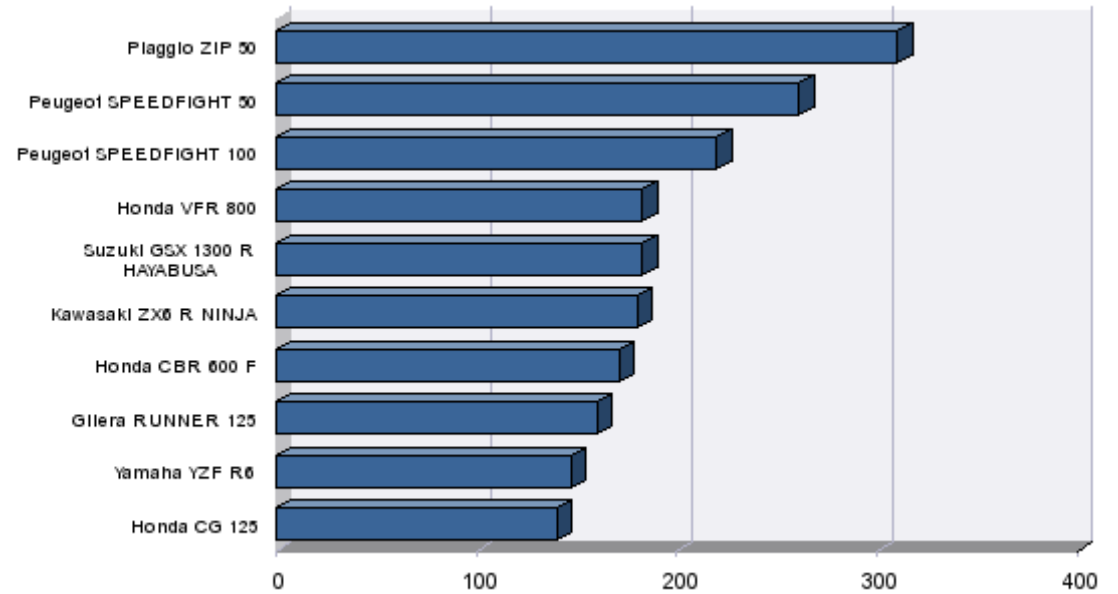
## Current Month and Year to Date Registrations by County

Territory	Jan 2001 Month			Jan 2000 Month			Total % Change	Jan 2001 YTD			Jan 2000 YTD			Total % Change	Number Dealers YTD	Volume YTD per Dealer	Per Pop YTD (x1000)
	MOPEDES	M/CS	TOTAL	MOPEDES	M/CS	TOTAL		MOPEDES	M/CS	TOTAL	MOPEDES	M/CS	TOTAL				
Dumfries and Galloway	7	5	12	3	7	10	20.0	7	5	12	3	7	10	20.0	1	12.00	0.08
Fife	10	19	29	8	26	34	-14.7	10	19	29	8	26	34	-14.7	1	29.00	0.07
Grampian	10	36	46	8	22	30	53.3	10	36	46	8	22	30	53.3	1	46.00	0.08
Highlands & Islands	2	13	15	6	18	24	-37.5	2	13	15	6	18	24	-37.5	1	15.00	0.04
Lothian & Borders	30	38	68	14	46	60	13.3	30	38	68	14	46	60	13.3	1	68.00	0.07
Strathclyde	12	60	72	10	47	57	26.3	12	60	72	10	47	57	26.3	1	72.00	0.04
Tayside	7	16	23	6	17	23	0.0 -	7	16	23	6	17	23	0.0 -	1	23.00	0.05
Northern Ireland	58	133	191	47	118	165	15.8	58	133	191	47	118	165	15.8	1	191.00	0.11
Guernsey	32	19	51	1	5	6	750.0	32	19	51	1	5	6	750.0	1	51.00	0.00
Isle Of Man	2	27	29	1	23	24	20.8	2	27	29	1	23	24	20.8	1	29.00	0.00
Jersey	19	19	38	0	0	0	0.0 -	19	19	38	0	0	0	0.0 -	1	38.00	0.00
Unspecified	6	19	25	17	33	50	-50.0	6	19	25	17	33	50	-50.0	1	25.00	0.00
<b>Total</b>	<b>2,940</b>	<b>6,466</b>	<b>9,406</b>	<b>1,934</b>	<b>4,711</b>	<b>6,645</b>	<b>41.6 </b>	<b>2,940</b>	<b>6,466</b>	<b>9,406</b>	<b>1,934</b>	<b>4,711</b>	<b>6,645</b>	<b>41.6 </b>	<b>60</b>	<b>156.77</b>	<b>0.15</b>



## Top 10 Selling Models Year to Date

	Model	YTD Registrations	Market Share
1	Piaggio ZIP 50	310	3.3%
2	Peugeot SPEEDFIGHT 50	261	2.8%
3	Peugeot SPEEDFIGHT 100	220	2.3%
4	Honda VFR 800	183	1.9%
4	Suzuki GSX 1300 R HAYABUSA	183	1.9%
6	Kawasaki ZX6 R NINJA	180	1.9%
7	Honda CBR 600 F	171	1.8%
8	Gilera RUNNER 125	160	1.7%
9	Yamaha YZF R6	147	1.6%
10	Honda CG 125	140	1.5%





## Top 10 Selling Models Year to Date by Capacity

0-50cc		YTD Registrations
1	Piaggio ZIP 50	310
2	Peugeot SPEEDFIGHT 50	261
3	Piaggio NRG	125
4	Piaggio VESPA ET2 50	120
5	Gilera RUNNER 50	89
6	Peugeot VIVACITY 50	87
7	Aprilia SR 50	84
7	Her Che FUN 50	84
7	Honda SH 50	84
10	Honda SZX 50	82

51-125cc		YTD Registrations
1	Peugeot SPEEDFIGHT 100	220
2	Gilera RUNNER 125	160
3	Honda CG 125	140
4	Piaggio VESPA ET4 125	139
5	Aprilia RS 125R EXTREMA	135
6	Aprilia SR 125	118
7	Piaggio TYPHOON 125	84
8	Honda C 90 CUB	77
9	Honda NES 125 @125	66
10	Yamaha DT 125	63

126-650cc		YTD Registrations
1	Kawasaki ZX6 R NINJA	180
2	Honda CBR 600 F	171
3	Yamaha YZF R6	147
4	Suzuki GSXR 600	89
5	Suzuki DRZ 400 S	86
6	Suzuki SV 650 S	81
7	Yamaha FZS 600 FAZER	72
8	Suzuki GSF 600 S BANDIT	65
9	Kawasaki ER 5	50
10	Suzuki GS 500	46

651-1000cc		YTD Registrations
1	Honda VFR 800	183
2	Aprilia RSV MILLE	109
2	Honda CBR 900 RR FIREBLADE	109
4	Yamaha YZF R1	95
5	Triumph BONNEVILLE	87
6	Honda VTR 1000 S	68
7	Honda VTR 1000 F FIRESTORM	57
7	Kawasaki ZX9 R NINJA	57
9	Aprilia SL 1000 FALCO	47
10	CODING ERROR CODING ERROR	44
10	Suzuki GSXR 750	44

Over 1000cc		YTD Registrations
1	Suzuki GSX 1300 R HAYABUSA	183
2	Yamaha XJR 1300	53
3	Kawasaki ZX12 R NINJA	37
4	Yamaha XVS 1100 DRAGSTAR	27
5	BMW R 1150 GS	26
5	Suzuki GSF 1200 BANDIT	26
7	Honda CBR 1100 XX SUPER BLACKI	24
7	Suzuki GSF 1200 S BANDIT	24
9	Honda ST 1100 PAN EUROPEAN	23
10	Yamaha XV 1600 WILDSTAR	18



## Brief Terms and Conditions

**All Rights Reserved. No part of this work may be reproduced, stored in a retrieval system, or transmitted, in any form or by any means, electronic, mechanical, photocopying, recording or otherwise, without prior permission of the author. For the avoidance of doubt, title, copyright and all other proprietary rights in the MOTORCYCLE REGISTRATION DATA including any part or parts thereof as published in either electronic media or eye readable format and all copies thereof shall remain vested in the MCI, and the subscriber shall not be permitted to copy, distribute, disclose, lend, hire, licence, sell or reproduce the same in any way except as provided for in the full terms and conditions. The full terms and conditions which apply to the sale and supply of MOTORCYCLE REGISTRATION DATA reports supplied by the Motor Cycle Industry Association Limited (MCI) are provided to bonafide subscribers and available from MCI on request. The subscriber is permitted to produce only such copies of the MOTORCYCLE REGISTRATION DATA supplied under the full terms and conditions as are necessary for their own INTERNAL commercial operational use. Such use is therefore limited to the address to which the MOTORCYCLE REGISTRATION DATA is sent by MCI, the MOTORCYCLE REGISTRATION DATA supplied by MCI or any part or parts thereof whether in eye readable or electronic media format and all copies thereof are confidential and shall not be divulged in whole or in part to any third party by the subscriber or their employees, servants or agents without the prior written consent of the MCI. Whilst every care is taken by the MCI in the compilation and creation of the information contained in the MOTORCYCLE REGISTRATION DATA, whether it is in an eye readable or electronic media format, no responsibility whatsoever can be accepted for any errors or omissions whether arising from negligence, breach of contract or howsoever, or for any loss of use, profits, contracts or any other indirect or consequential loss or damage howsoever caused.**

**The Motor Cycle Industry Association Limited No 1 Rye  
Hill Office Park, Allesley, Coventry CV5 9AB Registered in  
England No. 1113282.**